



**MID-CENTURY PENDANT LIGHT BY  
CARLO NASON FOR MAZZEGA  
"MODEL LS134"**

*A mid century-modern pendant light by  
Carlo Nason for Mazzega, "Model LS134"*

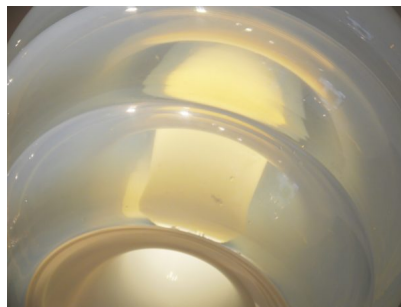
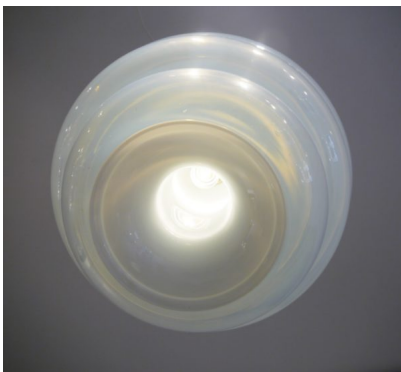
*Made in Italy in the 1960's.*

---

**Categories:** [Ceiling Lamp](#), [Lighting](#)

**GALLERY IMAGES**





## ADDITIONAL INFORMATION

<b>Dimensions</b>	40 × 40 × 50 cm
<b>Color</b>	Transparant
<b>Material</b>	Murano Glass