



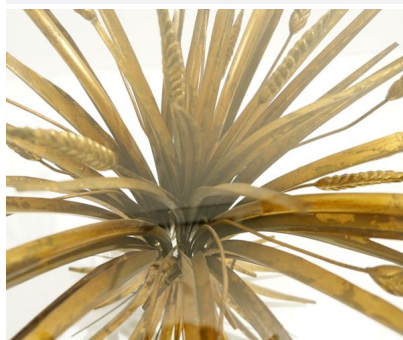
**MID CENTURY "SHEAF OF WHEAT"  
GUERIDON TABLE BY COCO CHANEL**

*A mid-century modern "Sheaf of Wheat"  
gueridon table by Coco Chanel.*

*Made in France in the 1970's.*

**Categories:** [Furniture](#), [Tables/Desks](#)

**GALLERY IMAGES**



# LIVING IN STYLE

GALLERY

**Gallery Tel:** + 44 (0) 20 8076 5055

**Mobile Tel:** + 44 (0) 7715 059 226

**Email:** [info@livinginstylegallery.com](mailto:info@livinginstylegallery.com)

**Site:** [livinginstylegallery.com](http://livinginstylegallery.com)



## ADDITIONAL INFORMATION

<b>Dimensions</b>	70 × 70 × 69 cm
<b>Color</b>	Gold
<b>Material</b>	Gilt Metal, Glass